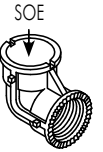


# Aluminum Pipe Fittings



## El, Serrated, 1-1/2" NPS, Alum

SE-0457 -  Ports -  Coating  
 SOE=Slip 1 End PNC=Process No Color  
 P\_\_=Paint



## El, Serrated, 1-1/2" NPS w/ Tri-Stud Adapter, Alum

SE-0514 -  Coating  
 PNC=Process No Color  
 P\_\_=Paint



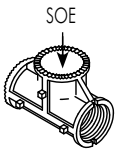
## El, Serrated, 1-1/2" NPS w/ Tri-Bolt Adapter, Alum

SE-0501 -  Coating  
 PNC=Process No Color  
 P\_\_=Paint



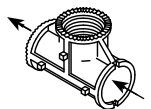
## Tee, Serrated, 1-1/2" NPS, Alum

SE-0458 -  Ports -  Coating  
 SOE=Slip 1 End PNC=Process No Color  
 P\_\_=Paint



## Tee, Serrated, 1-1/2" NPS, Horizontal Slip, Alum

SE-0474 -  Coating  
 PNC=Process No Color  
 P\_\_=Paint



- Note: 1. All assemblies are supplied standard with stainless steel fasteners.  
 2. If double set screws are required, specify by including -DS in the part number, i.e., SE-0457-DS-PNC.  
 3. See Reference Section for available paint colors.



# Aluminum Pipe Fittings



## Tee, Serrated, 1-1/2" NPS w/ Tri-Stud Adapter, Alum

SE-0513 -  Coating  
 PNC=Process No Color  
 P\_\_=Paint



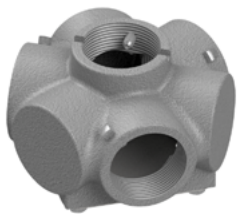
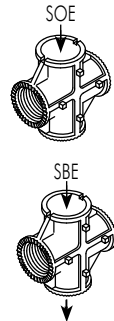
## Tee, Serrated, 1-1/2" NPS w/ Tri-Bolt Adapter, Alum

SE-0500 -  Coating  
 PNC=Process No Color  
 P\_\_=Paint



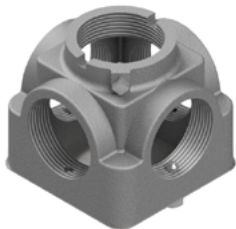
## Cross, Serrated, 1-1/2" NPS, Alum

SE-4038 -  Ports -  Coating  
 SOE=Slip 1 End PNC=Process No Color  
 SBE=Slip Both Ends P\_\_=Paint



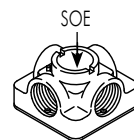
## Center Support, 3-Way, 1-1/2" NPS, Alum

SE-0310 -  Coating  
 PNC=Process No Color  
 P\_\_=Paint



## Center Support, 4-Way, 1-1/2" NPS, Alum

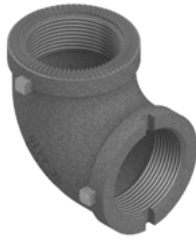
SE-0305 -  Ports -  Coating  
 SOE=Slip 1 End PNC=Process No Color  
 P\_\_=Paint



- Note: 1. All assemblies are supplied standard with stainless steel fasteners.  
 2. If double set screws are required specify by including -DS in the part number, i.e., SE-0513-DS-PNC.  
 3. See Reference Section for available paint colors.



# Iron Pipe Fittings



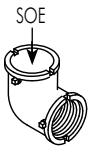
## Ell, Serrated, 1-1/2" NPS, Iron

SE-4415 -  Ports -  Coating  
 SOE=Slip 1 End GLV=Galvanized  
 P\_\_=Paint



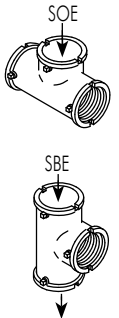
## Ell, 1-1/2" NPS, Iron

SE-4091 -  Ports -  Coating  
 SOE=Slip 1 End GLV=Galvanized  
 P\_\_=Paint



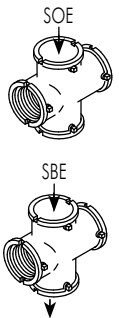
## Tee, 1-1/2" NPS, Iron

SE-4092 -  Ports -  Coating  
 SOE=Slip 1 End GLV=Galvanized  
 SBE=Slip Both Ends P\_\_=Paint



## Cross, 1-1/2" NPS, Iron

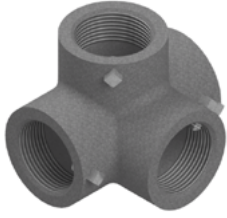
SE-4093 -  Ports -  Coating  
 SOE=Slip 1 End GLV=Galvanized  
 SBE=Slip Both Ends P\_\_=Paint



- Note: 1. All assemblies are supplied standard with stainless steel fasteners.  
 2. If double set screws are required, specify by including -DS in the part number, i.e., SE-4415-DS-PNC.  
 3. Iron fittings, with the exception of SE-4415 Ell, are not serrated. For serrations add brass or alum serrated locking.  
 4. See Reference Section for available paint colors.

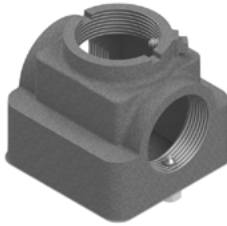
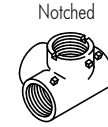
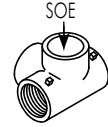


# Iron Pipe Fittings



## Side Outlet Tee, 1-1/2" NPS, Iron

SE-0437 -  Ports -  Coating  
SOE=Slip 1 End    GLV=Galvanized  
N=Notched        P\_\_=Paint



## Center Support, 2-Way, 1-1/2" NPS, Iron

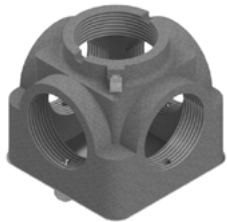
SE-0495 -  Coating  
P\_\_=Paint



## Center Support, 3-Way, 1-1/2" NPS, Iron

SE-0482 -  Coating  
P\_\_=Paint

Note: Double set screws are standard.



## Center Support, 4-Way, 1-1/2" NPS, Iron

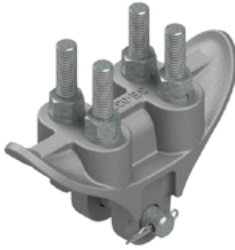
SE-0496 -  Coating  
P\_\_=Paint

- Note: 1. All assemblies are supplied standard with stainless steel fasteners.  
2. If double set screws are required, specify by including -DS in the part number, i.e., SE-0496-DS-PNC.  
3. Iron fittings, with the exception of SE-4415 Ell, are not serrated. For serrations add alum or brass serrated locking.  
4. See Reference Section for available paint colors.



# Span Wire

## Span Wire Clamp w/ U-Bolts, 3/4" Wide Slot, Alum



SE-0321 -  -  - PNC  
 Bushing Stainless Upgrade  
 Blank=None Blank=Galv  
 SS=Stainless Bushing SS=Stainless

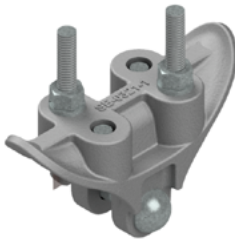
## Span Wire Clamp w/ U-Bolts, 5/8" Wide Slot, Alum

SE-4077 -  -  - PNC  
 Bushing Stainless Upgrade  
 Blank=None Blank=Galv  
 SS=Stainless Bushing SS=Stainless

## Span Wire Clamp w/ U-Bolts, 1/2" Wide Slot, Alum

SE-3211 -  -  - PNC  
 Bushing Stainless Upgrade  
 Blank=None Blank=Galv  
 SS=Stainless Bushing SS=Stainless

## Span Wire Clamp w/ J-Bolts, 3/4" Wide Slot, Alum



SE-4027 -  -  - PNC  
 Bushing Stainless Upgrade  
 Blank=None Blank=Galv  
 SS=Stainless Bushing SS=Stainless

## Span Wire Clamp w/ J-Bolts, 1/2" Wide Slot, Alum

SE-4397 -  -  - PNC  
 Bushing Stainless Upgrade  
 Blank=None Blank=Galv  
 SS=Stainless Bushing SS=Stainless

## Span Wire Clamp w/ U-Bolts, 1/2" Wide Slot, Iron



SE-0338 -  - GLV  
 Stainless Upgrade  
 Blank=Galv  
 SS=Stainless

## Span Wire Clamp w/ J-Bolts, 1/2" Wide Slot, Iron



SE-0441 -  - GLV  
 Stainless Upgrade  
 Blank=Galv  
 SS=Stainless

Note: 1. All assemblies are supplied standard with galvanized hardware on span wire clamps. Stainless upgrade shall include stainless steel hardware on span wire clamps.

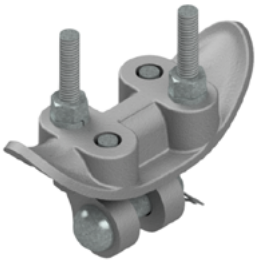




## Span Wire Clamp, Universal w/ J-Bolts 1/2" Wide Slot, Alum

SE-3217 -  -  - PNC  
Blank=None      Blank=Galv  
SS=Stainless Bushing      SS=Stainless

Bushing      Stainless Upgrade



## Span Wire Clamp, 90° w/ J-Bolts 1/2" Wide Slot, Alum

SE-3212 -  -  - PNC  
Blank=None      Blank=Galv  
SS=Stainless Bushing      SS=Stainless

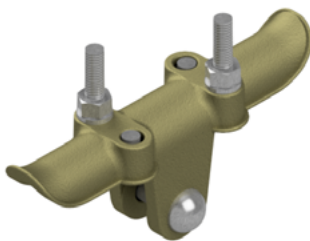
Bushing      Stainless Upgrade



## Span Wire Clamp w/ J-Bolts Serrated, Alum

SE-3213 -  - PNC  
Blank=Galv      SS=Stainless

Stainless Upgrade



## Span Wire Clamp w/ Stainless J-Bolts 3/4" Wide Slots, Bronze

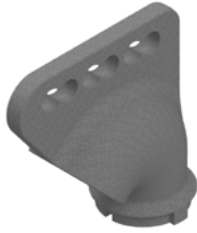
SE-3213 - PNC

Note:  
Supplied standard with stainless hardware.

Note: 1. All assemblies, with the exception of SE-3213 Bronze Clamp, are supplied standard with galvanized hardware on span wire clamps. Stainless upgrade shall include stainless steel hardware on span wire clamps.

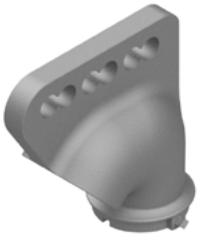


# Span Wire



## Wire Outlet Body, Iron w/ Grommet 1-1/2" NPS, 1/2" Wide Comb

SE-4118 -  -   
Coating  
P\_\_=Paint



## Wire Outlet Body, Alum w/ Grommet 1-1/2" NPS, 3/4" Wide Comb

SE-4117 -  - PNC  
Bushing  
Blank=None  
SS=Stainless Bushing



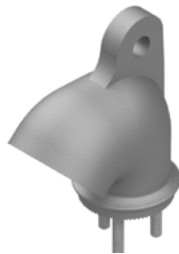
## Wire Outlet Body w/ Grommet 1-1/2" NPS, 3/4" Wide Comb, Bronze

SE-4421 -  -   
Coating  
PNC=Process No Color  
P\_\_=Paint



## Wire Outlet Body w/ Grommet Tri-Stud, 3/4" Wide Comb, Alum

SE-0545 -  -  -   
Bushing      Coating  
Blank=None      PNC=Process No Color  
SS=Stainless Bushing      P\_\_=Paint



## Wire Outlet Body w/ Grommet Tri-Stud, Single Clevis, Alum

SE-0524 -  -  -   
Bushing      Coating  
Blank=None      PNC=Process No Color  
SS=Stainless Bushing      P\_\_=Paint



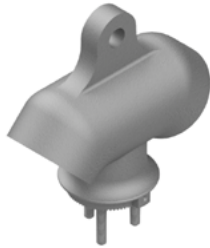
## Wire Outlet Body w/ Grommet Tri-Stud Adjustable, Alum

SE-0523 -  -   
Coating  
PNC=Process No Color  
P\_\_=Paint

- Note: 1. All assemblies are supplied standard with stainless steel fasteners.  
 2. If double set screws are required, specify by including -DS in the part number, i.e., SE-4118-DS-PNC.  
 3. See Reference Section for available paint colors.







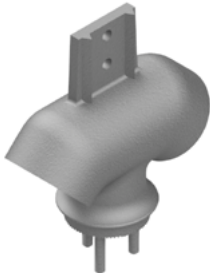
### Wire Outlet Body, Double Single Clevis Tri-Stud, 3/4" Wide, Alum

SE-0531 -  -   
 Bushing                      Coating  
 Blank=None                      PNC=Process No Color  
 SS=Stainless Bushing              P\_\_=Paint



### Wire Outlet Body, Double Single Clevis 1-1/2" NPS, 3/4" Wide, Alum

SE-4058 -  -   
 Bushing                      Coating  
 Blank=None                      PNC=Process No Color  
 SS=Stainless Bushing              P\_\_=Paint



### Wire Outlet Body, Double Adjustable Tri-Stud, Alum

SE-0532 -   
 Coating  
 PNC=Process No Color  
 P\_\_=Paint



### Wire Outlet Body, Double Multi Clevis Tri-Stud, 3/4" Wide Comb, Alum

SE-0558 -  -   
 Bushing                      Coating  
 Blank=None                      PNC=Process No Color  
 SS=Stainless Bushing              P\_\_=Paint



### Wire Outlet Body, Double Universal 1-1/2" NPS, 1/2" Wide Comb, Iron

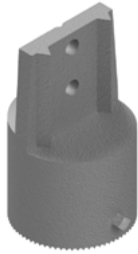
SE-4155 -  -   
 Bushing                      Coating  
 Blank=None                      P\_\_=Paint  
 SS=Stainless Bushing

Note: 1. All assemblies are supplied standard with stainless steel fasteners.  
 2. If double set screws are required, specify by including -DS in the part number, i.e., SE-4058-DS-PNC.  
 3. See Reference Section for available paint colors.



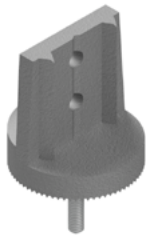


# Span Wire



## Hanger Body, 1-1/2" NPS, Alum

SE-0530 -   
Coating  
PNC=Process No Color  
P\_\_=Paint



## Hanger Body, Single-Stud, Alum

SE-0438 -   
Coating  
PNC=Process No Color  
P\_\_=Paint



## Hanger Body, Double Stud, Alum

SE-0516 -   
Coating  
PNC=Process No Color  
P\_\_=Paint

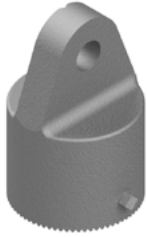


## Hanger Body, Tri-Stud, Alum

SE-0512 -   
Coating  
PNC=Process No Color  
P\_\_=Paint

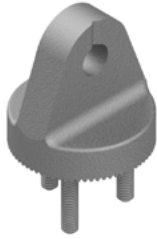
- Note: 1. All assemblies are supplied standard with stainless steel fasteners.  
2. If double set screws are required, specify by including -DS in the part number, i.e., SE-0530-DS-PNC.  
3. See Reference Section for available paint colors.





## Clevis Adapter, 1-1/2" NPS 3/4" Clevis, Alum

SE-4030 -  -   
 Bushing                      Coating  
 Blank=None                      PNC=Process No Color  
 SS=Stainless Bushing                      P\_\_=Paint



## Clevis Adapter, 5/16"-18 Tri-Stud 3/4" Wide Clevis , Alum

SE-4031 -  -   
 Bushing                      Coating  
 Blank=None                      PNC=Process No Color  
 SS=Stainless Bushing                      P\_\_=Paint



## Clevis Adapter, 1/2"-13 Single Stud 3/4" Wide Clevis, Alum

SE-0540 -  -   
 Bushing                      Coating  
 Blank=None                      PNC=Process No Color  
 SS=Stainless Bushing                      P\_\_=Paint

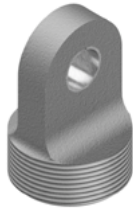


## Clevis Adapter, 1/2"-13 Single Stud 3/4" Wide Slot, Alum

SE-0630 -  -   
 Bushing                      Coating  
 Blank=None                      PNC=Process No Color  
 SS=Stainless Bushing                      P\_\_=Paint

Note: 1. All assemblies are supplied standard with stainless steel fasteners.  
 2. If double set screws are required, specify by including -DS in the part number, i.e., SE-4030-DS-PNC.  
 3. See Reference Section for available paint colors.

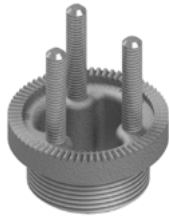
# Span Wire



## Span Wire Adapter, 1-1/2" NPS 5/8" Clevis w/ Stainless Bushing, Alum

SE-0371 -

Coating  
PNC=Process No Color  
P\_\_=Paint



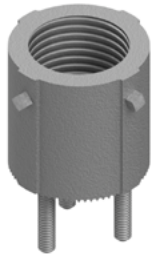
## Tri-Stud Adapter, 1-1/2" NPS External Threads Alum

SE-0503 - PNC



## Tri-Bolt Adapter, 1-1/2" NPS External Threads Alum

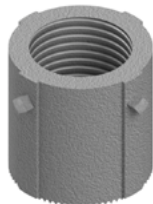
SE-0502 - PNC



## Tri-Stud Adapter, 1-1/2" NPS Internal Threads Alum

SE-0533 -

Coating  
PNC=Process No Color  
P\_\_=Paint



## Tri-Bolt Adapter, 1-1/2" NPS Internal Threads, Alum

SE-4242 -

Coating  
PNC=Process No Color  
P\_\_=Paint

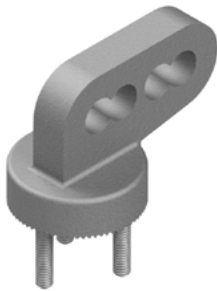
- Note: 1. All assemblies are supplied standard with stainless steel fasteners.  
2. If double set screws are required, specify by including -DS in the part number, i.e., SE-0533-DS-PNC.  
3. See Reference Section for available paint colors.





## Disconnect Balancer, 1-1/2" NPS 1/2" Wide Comb, Iron, Zinc 2

SE-0380-ZN2



## Disconnect Balancer, Tri-Stud 3/4" Wide Comb, Alum

SE-0505 -  -   
Blank=None                      PNC=Process No Color  
SS=Stainless Bushing        P\_\_=Paint

Note: 1. All assemblies are supplied standard with stainless steel fasteners.  
2. See Reference Section for available paint colors.





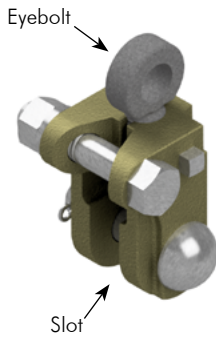
## PAL Balance Adjuster, Pivot and Lock Stainless Eyebolt, Steel

SE-3219	-	Slot	-	Eyebolt	-	Stainless Upgrade	-	Coating
		0.50=1/2" 0.75=3/4"		0.50=1/2" 0.75=3/4"		Blank=Galv SS=Stainless		GLV=Galvanized P__=Paint



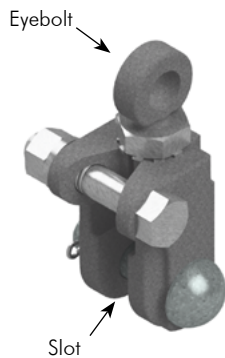
## Balance Adjuster, Iron

SE-3108	-	Slot	-	Eyebolt	-	Stainless Upgrade	-	Coating
		0.50=1/2" 0.75=3/4"		0.50=1/2" 0.75=3/4"		Blank=Galv SS=Stainless		GLV=Galvanized P__=Paint



## Balance Adjuster, Bronze

SE-3200	-	Slot	-	Eyebolt	-	Coating
		0.50=1/2" 0.75=3/4"		0.50=1/2" 0.75=3/4"		PNC=Process No Color P__=Paint



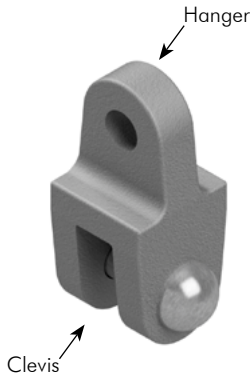
## Balance Adjuster w/ Jam Nut & Lock Washer, Iron

SE-3191	-	Slot	-	Eyebolt	-	Stainless Upgrade	-	Coating
		0.50=1/2" 0.75=3/4"		0.50=1/2" 0.75=3/4"		Blank=Galv SS=Stainless		GLV=Galvanized P__=Paint

Note: 1. All assemblies are supplied standard with stainless steel fasteners and galvanized clevis pins.  
Stainless upgrade shall include stainless steel clevis pins.  
2. See Reference Section for available paint colors.



## Clevis Hanger w/ Pins 3/4" Hanger x 3/4" Clevis, Alum



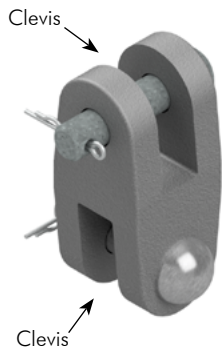
SE-0467 -  -  -   
 Bushing                      Stainless Upgrade                      Coating  
 Blank=None                      Blank=Galv                      PNC=Process No Color  
 SS=Stainless Bushing                      SS=Stainless                      P\_\_=Paint

## Clevis Hanger w/ Pins 3/4" Hanger x 1/2" Clevis, Alum

SE-0467 -  -  -   
 Bushing                      Stainless Upgrade                      Coating  
 Blank=None                      Blank=Galv                      PNC=Process No Color  
 SS=Stainless Bushing                      SS=Stainless                      P\_\_=Paint

## Clevis-Clevis Hanger w/ Pins 3/4" x 1/2", Alum

SE-0611 -  -  -   
 Bushing                      Stainless Upgrade                      Coating  
 Blank=None                      Blank=Galv                      PNC=Process No Color  
 SS=Stainless Bushing                      SS=Stainless                      P\_\_=Paint



## Clevis-Clevis Hanger w/ Pins 3/4" x 3/4", Alum

SE-0468 -  -  -   
 Bushing                      Stainless Upgrade                      Coating  
 Blank=None                      Blank=Galv                      PNC=Process No Color  
 SS=Stainless Bushing                      SS=Stainless                      P\_\_=Paint

## Clevis-Clevis Hanger w/ Pin 1/2" x 1/2", Alum

SE-0464 -  -  -   
 Bushing                      Stainless Upgrade                      Coating  
 Blank=None                      Blank=Galv                      PNC=Process No Color  
 SS=Stainless Bushing                      SS=Stainless                      P\_\_=Paint

Note: 1. All assemblies are supplied standard with stainless steel fasteners and galvanized clevis pins.  
 Stainless upgrade shall include stainless steel clevis pins.  
 2. See Reference Section for available paint colors.





## Extender Connector Hanger, 10-Hole Alum

SE-0539 -  -   
 Bushing                      Coating  
 Blank=None                      PNC=Process No Color  
 SS=Stainless Bushing      P\_\_=Paint



## Extender Connector Hanger, 10-Hole, Serrated, Alum

SE-0543 -  -   
 Bushing                      Coating  
 Blank=None                      PNC=Process No Color  
 SS=Stainless Bushing      P\_\_=Paint



## Extender Connector Hanger, 2-Hole 1/2" Width, Alum

SE-0508 -  -   
 Bushing                      Coating  
 Blank=None                      PNC=Process No Color  
 SS=Stainless Bushing      P\_\_=Paint

## Extender Connector Hanger, 2-Hole 3/4" Width, Alum

SE-0613 -  -   
 Bushing                      Coating  
 Blank=None                      PNC=Process No Color  
 SS=Stainless Bushing      P\_\_=Paint



## Extender Connector Hanger, 2-Hole Heavy Duty 3/4" Width, Alum

SE-0656 -  -   
 Bushing                      Coating  
 Blank=None                      PNC=Process No Color  
 SS=Stainless Bushing      P\_\_=Paint

Note: See Reference Section for available paint colors.





## Extender, 3/8" Dia Holes 1" CTC, Alum

SE-0507 -  -

Length                      Coating

11=11"                      PNC=Process No Color

19=19"                      P\_\_=Paint

40=40"

72=72"



## Tri-Stud Hanger Body, Adjustable 10-Hole, Alum

SE-0538 -

Coating

PNC=Process No Color

P\_\_=Paint



## Lower Arm, 2-Way 16-1/2" CTC Single Stud Serrated, Alum

SE-4010 -

Coating

PNC=Process No Color

P\_\_=Paint

## Lower Arm, 2-Way 17" CTC Single Stud Serrated, Alum

SE-0521 -

Coating

PNC=Process No Color

P\_\_=Paint

Note: 1. See Reference Section for available paint colors.



# Hubs & Mounting Brackets



## Hub Plate w/ Cable Guide, 1-1/2" NPS, Alum

SE-0444 -

Coating  
PNC=Process No Color  
P\_\_=Paint



## Hub Plate w/o Cable Guide, 1-1/2" NPS, Alum

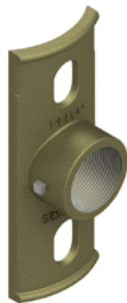
SE-0445 -

Coating  
PNC=Process No Color  
P\_\_=Paint

## Hub Plate w/o Cable Guide, 1-1/2" NPS, Iron

SE-4124 -

Coating  
P\_\_=Paint



## Hub Plate w/o Cable Guide, 1-1/2" NPS, Bronze

SE-4426 -

Coating  
PNC=Process No Color  
P\_\_=Paint

## Hub Plate, Universal, 1-1/2" NPS w/ 15/16" Dia Hole in Rear, Alum

SE-4071 -

Coating  
PNC=Process No Color  
P\_\_=Paint

## Hub Plate, Universal, 1-1/2" NPS w/ 1-1/2" Dia Hole in Rear, Alum

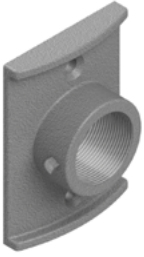
SE-4108 -

Coating  
PNC=Process No Color  
P\_\_=Paint

- Note: 1. All assemblies are supplied standard with stainless steel fasteners.  
2. Double set screw option available. Specify by including -DS in the part number, i.e., SE-0444-DS-PNC.  
3. See Reference Section for available paint colors.



# Hubs & Mounting Brackets



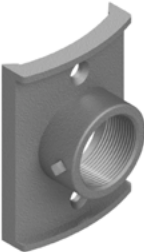
## Hub Plate, Flat Back, 1-1/2" NPS, Alum

SE-0415 -   
Coating  
PNC=Process No Color  
P\_\_=Paint



## Hub Plate, 4" Pipe, 1-1/2" NPS, Alum

SE-0454 -   
Coating  
PNC=Process No Color  
P\_\_=Paint



## Hub Plate, Large Pole, 1-1/2" NPS, Alum

SE-0357 -   
Coating  
PNC=Process No Color  
P\_\_=Paint

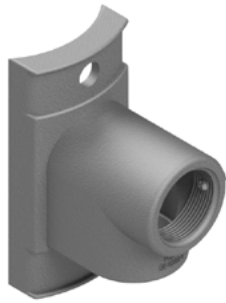
COMPONENTS



Note: 1. All assemblies are supplied standard with stainless steel fasteners.  
2. Double set screw option available. Specify by including -DS in the part number, i.e., SE-0415-DS-PNC.  
3. See Reference Section for available paint colors.



# Hubs & Mounting Brackets



## Hub Plate, Extended 1-1/2" NPS, Alum

SE-0381 -  -   
0.75=3/4" Mounting Hole PNC=Process No Color  
P\_\_=Paint



## Hub Plate, Extended 1-1/2" NPS w/ Downhole, Alum

SE-0382 -  -   
0.75=3/4" Mounting Hole PNC=Process No Color  
P\_\_=Paint



## Hub Plate, Extended Flat Back 1-1/2" NPS, Alum

SE-0465 -  -   
0.75=3/4" Mounting Hole PNC=Process No Color  
P\_\_=Paint



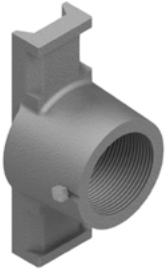
## Hub Plate, Extended Flat Back 1-1/2" NPS w/ Downhole, Alum

SE-0466 -  -   
0.75=3/4" Mounting Hole PNC=Process No Color  
P\_\_=Paint

Note: 1. All assemblies are supplied standard with stainless steel fasteners.  
2. Double set screw option available. Specify by including -DS in the part number, i.e., SE-0381-DS-PNC.  
3. See Reference Section for available paint colors.



# Hubs & Mounting Brackets



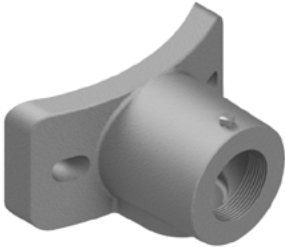
## Hub Plate, Narrow, 1-1/2" NPS, Alum

SE-4050 -  Coating  
PNC=Process No Color  
P\_=\_Paint



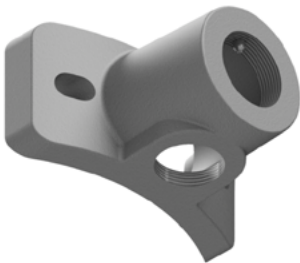
## Hub Plate, Single, 1-1/2" NPS, Alum

SE-0111 -  -  Mounting Hole Coating  
Blank= 3/8" Dia PNC=Process No Color  
0.563=9/16" Dia P\_=\_Paint



## Hub Plate, Wood Pole 1-1/2" NPS, Alum

SE-4079 -  Coating  
PNC=Process No Color  
P\_=\_Paint



## Hub Plate, Wood Pole 1-1/2" NPS w/ Downhole, Alum

SE-4080 -  Coating  
PNC=Process No Color  
P\_=\_Paint

- Note: 1. All assemblies are supplied standard with stainless steel fasteners.  
2. Double set screw option available. Specify by including -DS in the part number, i.e., SE-4050-DS-PNC.  
3. See Reference Section for available paint colors.

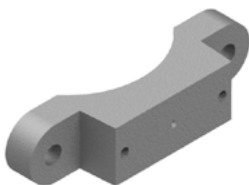


# Hubs & Mounting Brackets



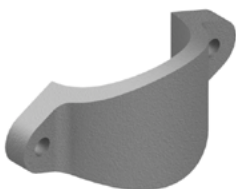
## Cabinet Mounting Bracket, Alum

SE-0425 -   
Coating  
PNC=Process No Color  
P\_\_=Paint



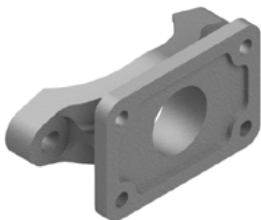
## Sign Clamp, 4-1/2" OD Pole, Alum

SH-0214 -   
Coating  
PNC=Process No Color  
P\_\_=Paint



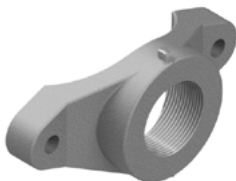
## Adapter, 2-7/8" to 3-1/2" OD Pole, Alum

SE-4078 -   
Coating  
PNC=Process No Color  
P\_\_=Paint



## Mounting Bracket, 4-1/2" OD Pole, Alum

SE-0104 -   
Coating  
PNC=Process No Color  
P\_\_=Paint



## Mounting Hub, 1-1/2" NPS, 4-1/2" OD Pole, Alum

SE-0384 -   
Coating  
PNC=Process No Color  
P\_\_=Paint

- Note: 1. All assemblies are supplied standard with stainless steel fasteners.  
2. Double set screw option available. Specify by including -DS in the part number, i.e., SE-0384-DS-PNC.  
3. See Reference Section for available paint colors.

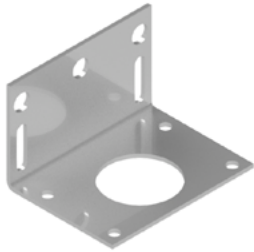


# Hubs & Mounting Brackets



**Cabinet Mounting Bracket, 1/8" Thick  
4-1/2" x 3-3/8" x 4-1/2", Alum**

SE-0141 -  Coating  
PNC=Process No Color  
P\_=\_Paint



**Cabinet Mounting Bracket, 1/8" Thick  
4-1/2" x 3-3/8" x 2-7/8", Alum**

SE-0113 -  Coating  
PNC=Process No Color  
P\_=\_Paint



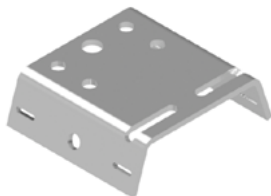
**Cabinet Mounting Bracket, 1/4" Thick  
6-3/4" x 3-1/2" x 2-1/16", Alum**

SE-0118 -  Coating  
PNC=Process No Color  
P\_=\_Paint



**Cabinet Mounting Bracket, 1/4" Thick  
6-3/4" x 4-1/2" x 2-1/16", Alum**

SE-0120 -  Coating  
PNC=Process No Color  
P\_=\_Paint



**Cabinet Mounting Bracket, 1/4" Thick  
6-3/4" x 6" x 2-1/16", Alum**

SE-0126 -  Coating  
PNC=Process No Color  
P\_=\_Paint

Note: See Reference Section for available paint colors.





# Hubs & Mounting Brackets



**Closure Plate, Alum  
Flasher Cabinet**

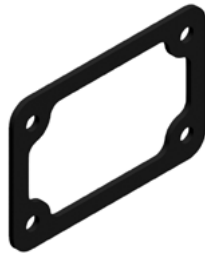
SE-0117 -

Coating



PNC=Process No Color

P\_\_=Paint



SE-0119-PNC

**Hub Gasket, 1/8" Closed Cell Sponge  
Adhesive Backed  
Flasher Cabinet**



SE-0148-PNC

**Hub Gasket, 1/8" Neoprene  
Flasher Cabinet**

This page is intentionally left blank.

# COMPONENTS





### Support Tube, 1-1/2" NPS, Alum

SE-0326 -  Length in Inches -  Coating  
 PNC=Process No Color  
 P\_\_=Paint

### Support Tube, 2" NPS, Alum

SE-4370 -  Length in Inches -  Coating  
 PNC=Process No Color  
 P\_\_=Paint

### Support Tube, 1-1/2" NPS, Steel

SE-0491 -  Length in Inches -  Coating  
 PNC=Process No Color  
 P\_\_=Paint



### Pipe, 1-1/2", Sch 40, Alum

SE-0484 -  Length in Inches -  Coating  
 PNC=Process No Color  
 P\_\_=Paint

### Pipe, 1-1/2", Sch 80, Alum

SE-0475 -  Length in Inches -  Coating  
 PNC=Process No Color  
 P\_\_=Paint

### Pipe, 2", Sch 40, Alum

SE-0494 -  Length in Inches -  Coating  
 PNC=Process No Color  
 P\_\_=Paint

### Pipe, 2", Sch 80, Alum

SE-4362 -  Length in Inches -  Coating  
 PNC=Process No Color  
 P\_\_=Paint

Note: 1. Standard tubes and pipes are sold in 1 inch increments. For other lengths contacts sales.  
 2. See Reference Section for available paint colors.



## Nipple, 1-1/2" NPS, Alum

Length  
in Inches      Coating

SE-0436 -  -

PNC=Process No Color  
P\_\_=Paint

## Nipple, 1-1/2" NPS x 1-1/2" NPT, Alum

Length  
in Inches      Coating

SE-4204 -  -

PNC=Process No Color  
P\_\_=Paint

## Nipple, 1-1/2" NPS, Steel

Length  
in Inches      Coating

SE-0469 -  -

P\_\_=Paint

## Nipple, 1-1/2" NPT, Steel

Length  
in Inches      Coating

SE-4200 -  -

P\_\_=Paint

## All Thread Nipple, 1-1/2" NPS, Alum

Length

SE-0309 -  - PNC

02.13=2-1/8"  
02.5=2-1/2"  
03=3"  
04=4"  
04.5=4-1/2"  
05=5"  
06=6"



## All Thread Nipple, 1-1/2" NPS, Steel

Length

SE-0492 -  - ZN1

02.13=2-1/8"  
02.5=2-1/2"  
03=3"  
04=4"  
04.5=4-1/2"  
05=5"  
06=6"

## Close Nipple, 1-1/2" NPS x 1-1/2" NPT, Steel

Length

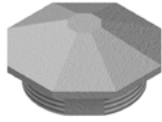
SE-4063 -  - ZN1

02.5=2-1/2"  
03=3"  
03.5=3-1/2"

Note: 1. Standard tubes and pipes are sold in 1 inch increments. For other lengths contacts sales.  
2. See Reference Section for available paint colors.



# Caps & Closures

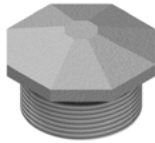


## Octagonal Closure Cap, Alum 1-1/2" NPS x 1/2"

SE-4088 -

Coating

PNC=Process No Color  
P\_\_=Paint

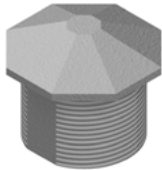


## Octagonal Closure Cap, Alum 1-1/2" NPS x 7/8"

SE-0361 -

Coating

PNC=Process No Color  
P\_\_=Paint

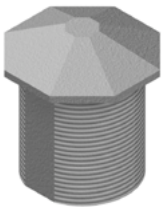


## Octagonal Closure Cap, Alum 1-1/2" NPS x 1-3/8"

SE-0483 -

Coating

PNC=Process No Color  
P\_\_=Paint

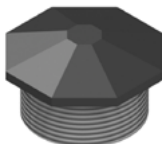


## Octagonal Closure Cap, Alum 1-1/2" NPS x 2"

SE-0442 -

Coating

PNC=Process No Color  
P\_\_=Paint



## Octagonal Closure Cap, Plastic 1-1/2" NPS x 7/8"

SE-0499 -

Coating

P01=Yellow  
P02=Black  
P05=New York State Green (forest)  
P06=Automatic Green (dark olive)  
P17=Platinum

Note: See Reference Section for available paint colors.





## Fitting Cap, 1-1/2", Plastic

SE-0304 -   
Coating  
P01=Yellow  
P02=Black

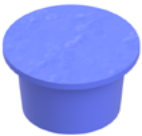


## Fitting Cap, 1-1/4", Plastic

SE-0419 -   
Coating  
P01=Yellow  
P02=Black



## AS-0398-P02 Tube Cap, Black Plastic



## AB-0271-PNC Cap, CGB Closure, 3/4", Blue Plastic



## SE-0479-PNC Plug, 1-1/4" Sq Hd, Threaded, Plastic,



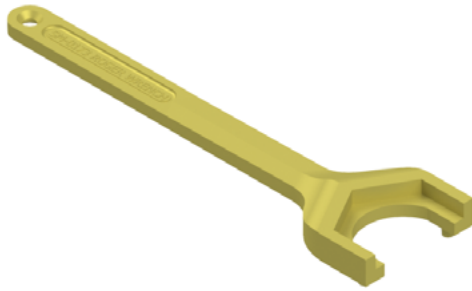
## Signal Closure Kit, Plastic

SE-3054 -   
Coating  
P01=Yellow  
P02=Black  
P05=New York State Green (forest)  
P06=Automatic Green (dark olive)

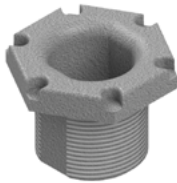
Note: 1. All assemblies are supplied standard with stainless steel fasteners.



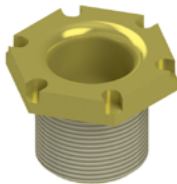
# Hardware



SM-0173-ZN2 **Roger Wrench w/ 10" Handle, Steel, Zinc 2**

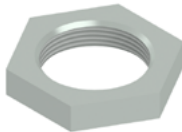


SE-0443-PNC **Hex Nipple, 1-1/2" NPS x 1-1/2" Lg, Alum**



SE-0435-ZN2 **Hex Nipple, 1-1/2" NPS x 1-1/2" Lg, Steel, Zinc 2**

SE-0644-ZN2 **Hex Nipple, 1-1/2" NPS x 1-3/4" Lg, Steel, Zinc 2**



SE-4017-ZN1 **Hex Nut, 1-1/2" NPS, Iron**

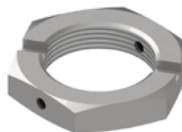


### Check Nut, 1-1/2" NPS, Alum

SE-0448 -  - PNC

Set Screws

1S=Single Set Screw  
DS=Double Set Screw



### Check Nut, 1-1/2" NPS, Steel, White Zinc

SE-0670 -  - ZN1

Set Screws

1S=Single Set Screw  
DS=Double Set Screw

Note: 1. All assemblies are supplied standard with stainless steel fasteners.  
2. See Reference Section for available paint colors.





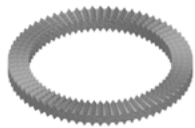
# Hardware



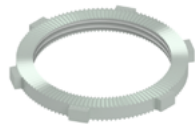
SE-0360-PNC **Lockring, Serrated, Alum**



SE-4029-BRS **Lockring, Serrated, Brass**



SE-0451-PNC **Lockring, Double Serrated, Alum**



SE-4125-PNC **Conduit Locknut, 1-1/2" NPS,  
w/ Serrations, Zinc 1**



SE-4048-ZN1 **Conduit Locknut, 3/4" NPT, Zinc 1**

COMPONENTS

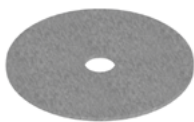
**pelco**  
PELCO PRODUCTS, INC.



## Hardware



SE-0375-SS **Slotted Washer, Stainless**



SE-4113-SS **Washer, Stainless**  
**0.39" ID x 2.44" OD x .06" THK**



SE-4061-SS **Washer, Stainless**  
**1.97" ID x 2.61" OD x .06" THK**



SE-4061-ZN1 **Washer, Steel, Zinc 1**  
**1.92" ID x 2.61" OD x .06" THK**



SE-0367-PNC **Washer, Nylon**  
**1.93" ID x 2.69" OD x .12" THK**



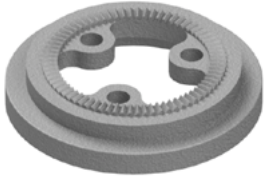
SE-0354-PNC **Gasket, Neoprene**



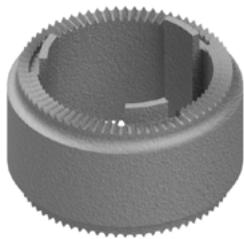
AB-0278-PNC **Gasket, Slotted Tri-Bolt, Neoprene**



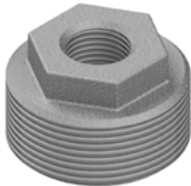
SE-0449-PNC **Grommet, 1-1/2" w/ Diaphragm  
Neoprene**



AB-0218-PNC **Adapter Ring, 3M, Alum**



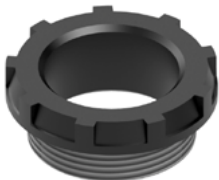
SE-0477-PNC **ICC Ped Head Spacer, Alum**



SE-0577-GLV **Reducer Bushing,  
1-1/2" NPT x 1/2" NPT,  
Galvanized Iron**

SE-0471-GLV **Reducer Bushing,  
1-1/2" NPT x 3/4" NPT,  
Galvanized Iron**

SE-0565-GLV **Reducer Bushing,  
1-1/2" NPT x 1" NPT,  
Galvanized Iron**



SE-4011-PNC **Insulator Bushing, 1-1/2" NPS,  
Black Plastic**



SE-4028-ZN1 **CGB, 3/4", .55" to .65" Wire, Zinc 1**

SE-0490-ZN1 **CGB, 3/4", .55" to .75" Wire, Zinc 1**

SE-4216-ZN1 **CGB, 1", .55" to .65" Wire, Zinc 1**

# Hardware



## Notched Coupling, 1-1/2" NPS x 2", Alum

SE-0346 -   
Coating  
PNC=Process No Color  
P\_\_=Paint



## Notched Coupling, 1-1/2" NPS x 2", Steel

SE-4170 -   
Coating  
GLV=Galvanized  
P\_\_=Paint



## Notched Coupling, Steel 1-1/2" NPS x 2" w/ Lock Ring

SE-3254 -  -   
Lock Ring      Coating  
Blank=Alum      GLV=Galvanized  
BRS=Brass      P\_\_=Paint

- Note: 1. All assemblies are supplied standard with stainless steel fasteners.  
2. Double set screw option available. Specify by including -DS in the part number, i.e., SE-0346-DS-PNC.  
3. See Reference Section for available paint colors.

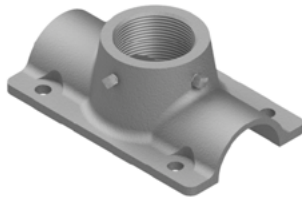




## Slip Connector, 1-1/2" NPS, Alum

SE-0535 -

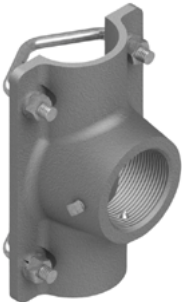
Coating  
PNC=Process No Color  
P\_\_=Paint



## Tube Saddle, 1-1/2" NPS, Alum

AB-0262 -

Coating  
PNC=Process No Color  
P\_\_=Paint



## Tube Saddle Kit, 1-1/2" NPS w/ 5/16" V-Bolts & Hardware, Alum

AB-3048 -

Coating  
PNC=Process No Color  
P\_\_=Paint

Note: 1. All assemblies are supplied standard with stainless steel fasteners.  
2. See Reference Section for available paint colors.



# Banding Products

## BANDING

Catalog Number	Width		Thickness		Weight	
	Inches	mm	Inches	mm	Lbs	Kg

### TYPE 201 STAINLESS STEEL - 100 Ft. Per Roll

US-8122-04	1/2	12.70	0.030	0.76	5.1	2.4
US-8122-05	5/8	15.88	0.030	0.76	6.4	3.0
US-8122-06	3/4	19.05	0.030	0.76	7.7	3.6

### TYPE 316 STAINLESS STEEL BAND - 100 Ft. Per Roll

US-8124-04	1/2	12.70	0.030	0.76	5.1	2.4
US-8124-05	5/8	15.88	0.030	0.76	6.4	3.0
US-8124-06	3/4	19.05	0.030	0.76	7.7	3.6

## HEAVY DUTY (HD) BANDING

Heavy Duty Band is available in type 201. HD Band is designed for heavy duty applications and 1-1/4", 201 stainless steel band has a breaking strength of approximately 5500 lbs. We recommend double wrapping for maximum strength.

Catalog Number	Width		Thickness		Weight	
	Inches	mm	Inches	mm	Lbs	Kg

### TYPE 201 HEAVY DUTY STAINLESS STEEL BAND - 100 Ft. Per Roll

US-8124-30	3/4	19.05	0.044	1.12	11.6	5.4
US-8124-31	1	25.40	0.044	1.12	13.7	6.4
US-8124-32	1-1/4	31.75	0.044	1.12	17.2	8.0

### BAND-STRAP .024" (.061mm) THICK - 200 - 300 Stainless Steel

Catalog Number	Width		Weight		Package Quantity
	Inches	mm	Lbs	Kg	
US-8121-34	1/2	12.70	4.08	1.85	100 Ft. Roll
US-8121-35	5/8	15.88	5.09	2.31	100 Ft. Roll
US-8121-36	3/4	19.05	6.11	2.77	100 Ft. Roll
US-8121-28	1/2	12.70	8.15	3.70	200 Ft. Roll
US-8121-29	5/8	15.88	10.19	4.62	200 Ft. Roll
US-8121-30	3/4	19.05	12.23	5.54	200 Ft. Roll



## BAND TOOL

The USA BAND TOOL is a forged double-plated tool capable of tensioning over 2400 lbs. The banding tool has a built-in cutter and a spring loaded gripper lever. The spin handle has a large retaining ring to keep the handle in place and can be used to hang on a tool belt.

Catalog Number	Description
US-8120-01	The USA Band Tool, Wt. 4.4 lbs (2.0 kg) - Package Quantity 1
US-8120-43	Close Quarter Tension Nut. Replaces tool tension handle when space is limited. Package Quantity 1
US-8120-06	Tension Screw/Handle kit - Package Quantity 1



## HEAVY DUTY BAND TOOL

The Heavy Duty TOOL must be used with all Heavy Duty Bands. The HD TOOL is 16-1/2 inches long and is capable of up to 6,000 lbs. of tensioning.

Catalog Number	Description
US-8121-10	The Heavy Duty Tool, Wt 11.7 lbs (5.3 Kg) - Package Quantity 1



## BUCKLES

Catalog Number	Width		Weight	
	Inches	mm	Lbs	Kg

### TYPE 201 STAINLESS STEEL BUCKLES - Package Quantity 100

US-8122-54	1/2	12.70	2.1	1.0
US-8122-55	5/8	15.88	2.4	1.1
US-8122-56	3/4	19.05	3.7	1.7

### TYPE 316 STAINLESS STEEL BUCKLES - Package Quantity 100

US-8124-54	1/2	12.70	2.1	1.0
US-8124-55	5/8	15.88	2.4	1.1
US-8124-56	3/4	19.05	3.7	1.7

### GALVANIZED CARBON STEEL BUCKLES - Package Quantity 100

US-8123-54	1/2	12.70	2.1	1.1
US-8123-55	5/8	15.88	2.4	1.1
US-8123-56	3/4	19.05	3.7	1.7



## HEAVY DUTY BUCKLES

HD Buckles are offered in widths and metals to correspond to HD Band. Clamps may be double wrapped for extra strength.

Catalog Number	Width		Weight	
	Inches	mm	Lbs	Kg

### TYPE 201/301 STAINLESS STEEL - Package Quantity 25

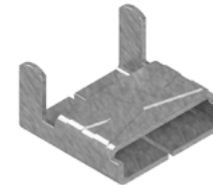
US-8124-40	3/4	19.05	1.8	0.8
US-8124-41	1	25.40	2.4	1.1
US-8124-42	1-1/4	31.75	3.2	1.4

## BAND CLIPS

Catalog Number	Width		Weight	
	Inches	mm	Lbs	Kg

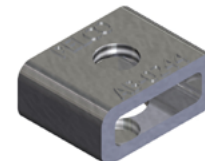
### TYPE 201 STAINLESS STEEL BAND CLIPS - Package Quantity 100

US-8121-54	1/2	12.70	2.1	1.0
US-8121-55	5/8	15.88	2.4	1.1
US-8121-56	3/4	19.05	3.7	1.7



## A-SCREW LOCK BUCKLES - Stainless Steel

Catalog Number	Width		Weight		Package Quantity
	Inches	mm	Lbs	Kg	
US-8127-24	1/2	12.70	2.1	1.0	25
US-8127-25	5/8	15.88	2.4	1.1	25
US-8127-26	3/4	19.05	3.7	1.7	25



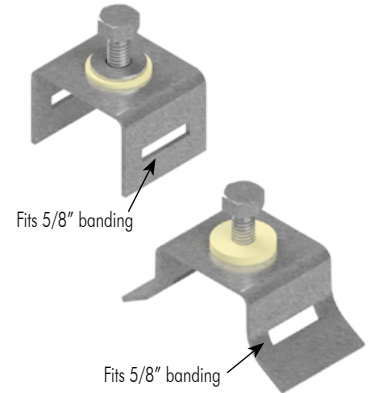
Width Inches	Thick	201		316		Thick	Force	Thick	Force
		Force	Force	Force	Force				
1/2	0.030	1500	1200	0.015	600	0.020	850	0.025	1050
5/8	0.030	1875	1500	0.015	750	-	-	-	-



# Brackets

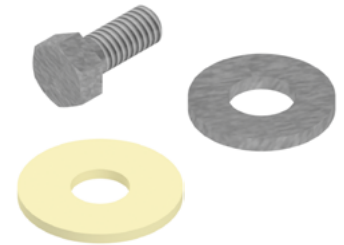
## SIGN MOUNTING BRACKETS

Catalog Number	Discription	Weight	
		Lbs	Kg
<b>1-BOLT STRAIGHT LEG BRACKET (.075" THICK) - Package Quantity 50</b>			
US-8121-00	Stainless Steel with SS Bolt, Washer and Fiber Washer	7.3	3.3
US-8120-04	Stainless Steel without Bolt or Washer		
US-8120-11	Zinc Plated Steel with Carbon Bolt, Washer and Fiber Washer	7.6	3.5
<b>1-BOLT FLARED LEG BRACKET (.075" THICK) - Package Quantity 50</b>			
US-8120-21	Stainless Steel with SS Bolt and Washer	7.6	3.5
US-8120-31	Zinc Plated Steel with Carbon Bolt, Washer and Fiber Washer	7.4	3.4



## BOLTS, WASHERS for BRACKETS - 50 Per Box

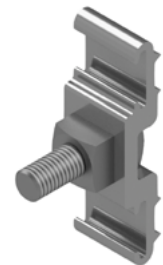
Catalog Number	Description
US-8120-02	Bolts Stainless Steel for Stainless Brackets (5/16 - 18 x 3/4" Long Hex Head)
US-8121-80	Bolts Zinc Plated Steel for Carbon Steel Brackets (5/16 - 18 x 3/4" Long Hex Head)
US-8120-03	Fiber Washers



## MOUNTING PLATES - Per Each - Secure with band and buckles.

Strapping holds this extruded aluminum mounting plate to utility poles.

Catalog Number	Description	Weight Lbs/Ea
US-8125-10	Light Duty, 1-1/2" x 4-3/4" w/ 5/8"-11 x 2" Plated Bolt	0.57
US-8125-12	Heavy Duty, 1-1/2" x 5-1/4" w/ 5/8"-11 x 2" Plated Bolt	0.78
US-8125-11	Heavy Duty, 1-1/2" x 5-1/4" w/ 5/8"-11 x 3" Plated Bolt	0.84
US-8125-13	Heavy Duty, 1-1/2" x 5-1/4" w/ 3/4"-11 x 3" Plated Bolt	1.22



## USA BOLT / CLAMP - Per Each

Extruded aluminum fittings with zinc plated bolt, nut and washer. To be used with USA Band for mounting pole hardware.

Catalog Number	Description	Weight Lbs/Ea
US-8500	Bolt/Clamp for use with 3/4" USA BAND band (US-8122-06). Includes plated nut, bolt 3/8" - 16 x 16" and washer.	0.43
US-8504	Bolt/Clamp for use with 1-1/4" USA BAND band (US-8124-62). Includes plated nut, bolt 5/8" - 11 x 8" and washer.	1.48

