



PH: 405-340-3434
 FAX: 405-340-3435
 Edmond, OK 73013
 www.pelcoinc.com

This drawing is the property of Pelco and is not to be used in whole or in part without Pelco's written permission.

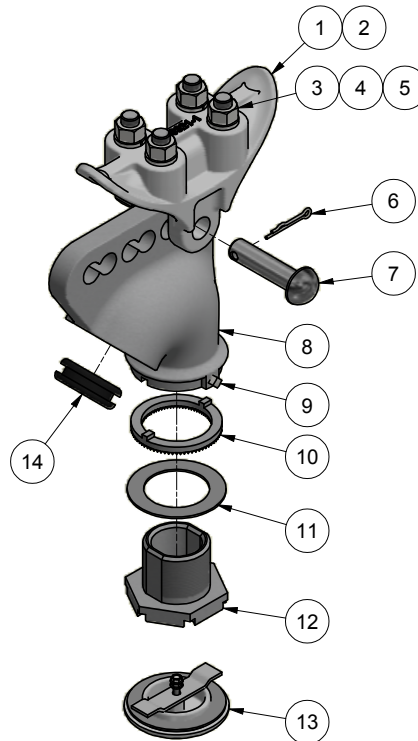
ASSEMBLY CUT SHEET

REF:

TITLE:
 Span Wire Assy, w/ Signal Closure Kit, Alum

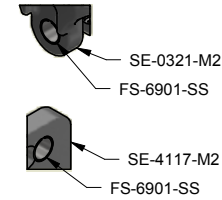
PART NO.:

SE-3043



Example Part No.
 SE-3043-PXX
 SE-3043-SB-SS-PXX

Stainless Bushing
 Stainless Upgrade
 Process No Color=PNC
 Paint=PXX



[Stainless Bushing Option](#)

Options
SB=Stainless Bushing
SS=Stainless Upgrade
Paint

Note: Stainless upgrade to include stainless pins & hardware.

ITEM	PART NUMBER	DESCRIPTION	QTY
1	SE-0321-M1	Body, Span Wire Clamp, 3/4", Alum	1
2	SE-0462-M1	Cable Bar, Span Wire Clamp, Alum	1
3	FS-1005-GLV	Nut, Hex 1/2"-13, Gr 2H/DH Galv	4
4	FS-4202-GLV	Lock Washer, Split, 1/2", Galv	4
5	FS-2507-GLV	U-Bolt, 1/2"-13 x 2-1/8" x 49/64" x 1-3/8" , Galv	2
6	FS-6100-SS	Pin, Cotter, Humped, 5/32" X 1.775", 304 Stainless	1
7	FS-6000-GLV	Pin, Clevis, 5/8" x 2-1/4" EL (.603-.610 Dia) Galv	1
8	SE-4117-M1	Wire Outlet Body, 3/4", 1-1/2" NPS, Alum	1
9	FS-3205-SS	Set Screw, Square Hd, Cup Point, 1/4"-20 x 5/8", Type 304 Stainless	1
10	SE-0360-PNC	Lockring, Serrated, 380 Die Cast Alum	1
11	SE-0354-PNC	Gasket, 70 Duro Neoprene	1
12	SE-0443-PNC	Cast Nipple, Hex, 1-1/2" NPS, Die Cast Alum	1
13	SE-3054-PXX	Signal Closure Kit	1
14	SE-0449-PNC	Grommet, 1-1/2" , w/ Diaphragm	1

Pelco Assy Vdr. 8/20/18

LACORD	5/19/1992	KMB	10/17/2007	JDC	4/26/2018	ARKV	5/2/2018	J	2/11/19 TRL	JSH	2/12/2019	SHEET 1 OF 1
DRAWN:	DATE:	CHECKED:	DATE:	MEG.ENG:	DATE:	QA:	DATE:	REV:	DATE:	REV.CHKD:	DATE:	